






Lancaster campus

Key

- Loop system 
- Building access 
- Reception 
- Car park 
- Disabled person's car park 

Buildings

Buildings	No
Alexandra Building	1
Art studio	2
Askwith Building	3
Backs	4
Barbon	5
Bishop Cross	6
Cafe Martineau	7
Chapel	8
College Main	9
College North	10
College South	11
Dalton Building	12
Estates	13
Fieldhead	14
Gateway Building	15
Gressingham halls	16
Harold Bridges library	17
Hornby halls	18
Hugh Pollard lecture theatre	19
Humanities block	20
Ingleton House	21
Kay Shuttleworth lecture theatre	22
The Keep	23
Lancaster dining room	24
Long Corridor	25
Melling	26
PK 1-4	27
PK 6-11	28
Pre-school centre & baby unit	29
Primary curriculum centre	30
Print unit	31
Range	32
Sarah Witham Thompson halls	33
Secondary centre	34
Social bar	35
Sports complex	36
Students' Union	37
Waddell halls	38
William Thompson halls	39

Car parking

Visitors should use the pay and display parking. For those visiting by invitation, parking may be booked in advance.

Central administration

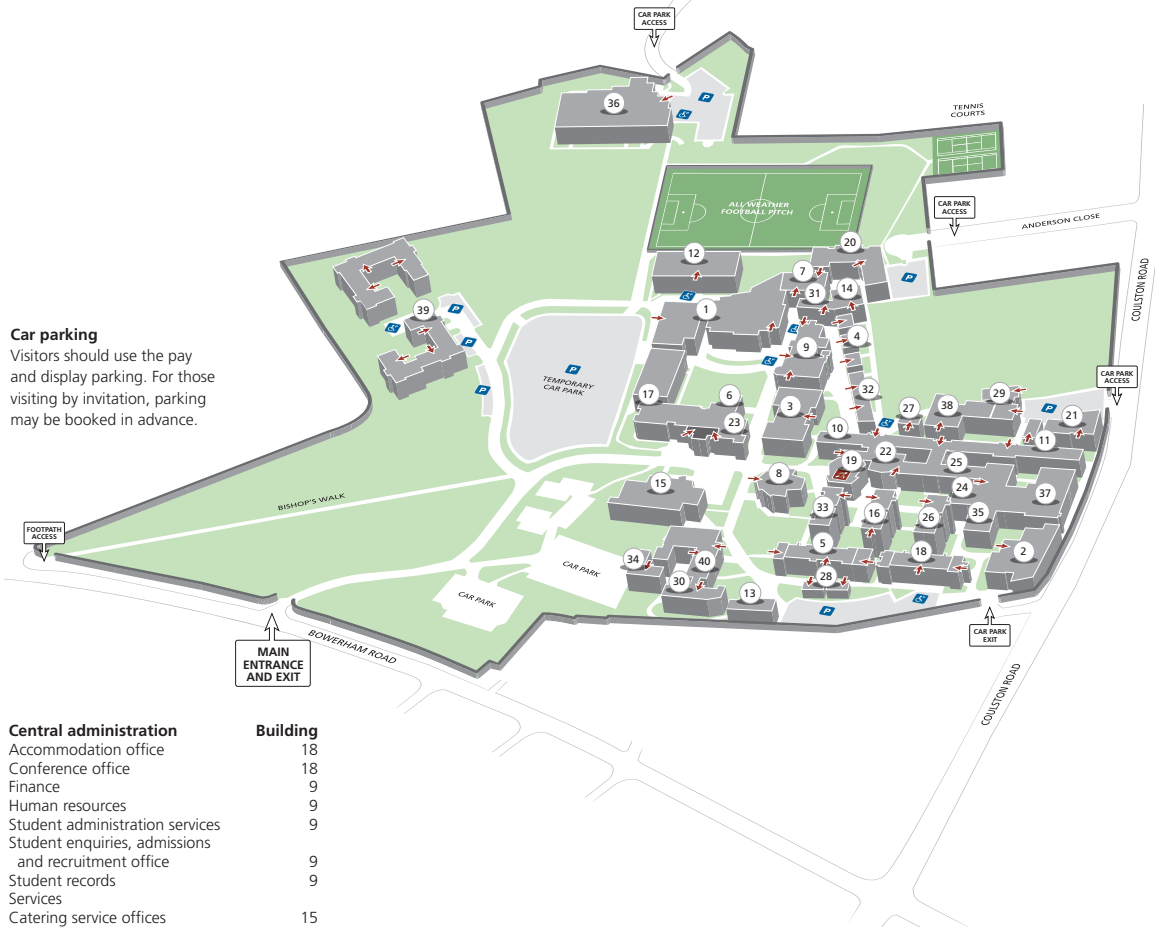
Central administration	Building
Accommodation office	18
Conference office	18
Finance	9
Human resources	9
Student administration services	9
Student enquiries, admissions and recruitment office	9
Student records	9
Services	
Catering service offices	15
Chaplaincy centre	39
Computer centre	6
Domestic services	18
Estates	5 and 13
Hospitality and campus services	18
Information services helpdesk	1
Main reception	15
Occupational health	5
Learning, Information and Student Services (LISS)	
- One stop shop	15
- Academic skills	15
- Careers guidance	15
- Complaints, harassment and adjudication	15
- Counselling	15
- Disability support	15
- Finance advice	15
- International student advice	15
- i zone	15
- Reception	15
- Room 301	15
- Skills zone	15
- Snack zone	15
- View!	15
TDA test centre	20

Amenities

Amenities	Building
Askwith lecture theatre	3
Black Box theatre	3
Bookshop	25
Cafe Martineau	7
Chapel	8
Dance studio	1 and 6
Gallery	1
Hugh Pollard lecture theatre	19
ICT open access	17
JCR bar	37
Kay Shuttleworth lecture theatre	22
Lancaster Rooms 1 and 2	24
Library	17
Pre-school centre and baby unit	29
Print unit	31
Social bar	35
Sports complex	36
Students' dining room—'View!'	15
Students' Union common room—Smarties lounge	37
Students' Union shop	37
Students' Union office	37
Staff common room	25
Videoconferencing suite	1

Departments

Departments	Building
Art studios	1 and 2
Centre for Development of Learning and Teaching (CDLT)	16
Division of Medical Imaging Sciences	12
Division of Science and Technology	30
Faculty of Business, Social Science and Sports offices	20
Faculty of Education offices	5
Faculty of Health, Medical Science and Social Care offices	16
Language development centre	21
Marketing, Recruitment and Communications (MRC)	9
Music rooms	32
Primary curriculum centre	30
Quality Assurance and Standards Unit	16
Recruitment and outreach office	9
Rehabilitation and Public Health Research Office and Graduate School	12
School of Applied Social Science	5
School of Business and Enterprise	1
Staff post room	15
Strategic Planning and Policy Support Service	18



How to find us

Lancaster is a vibrant and cosmopolitan university city, home to around 15,000 students from all over the world. The city is in a great location, close to the sea, hills and mountains.

The campus is just a 15–20 minute walk from the town centre. It is largely self-contained, making it easy to live and study here. It has exceptionally good teaching facilities and a superb library. Sports facilities are outstanding with a state-of-the-art, all-weather pitch, £2.5 million sports complex, gymnastics centre and fitness centre. Students also have access, off-campus, to an international athletics track and swimming pool.

The historic town of Lancaster has all the high-street stores as well as small specialist shops. There are many lively pubs, clubs and restaurants, three theatres, cinemas and an eclectic music scene.

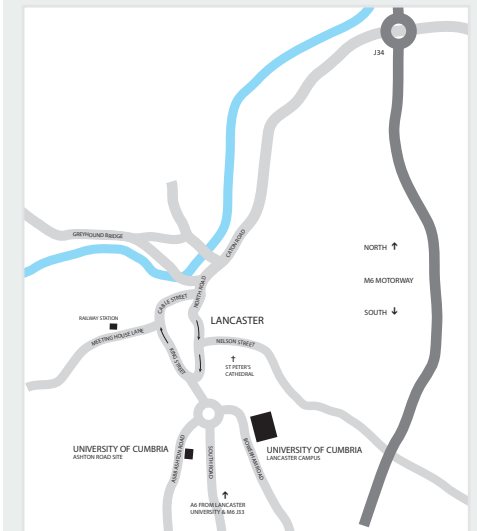
By road

From the north leave the M6 at junction 34 and follow signs to the city centre. Travel south, keeping in the left lane of the one-way system. Just past the Royal Lancaster Infirmary (on the right), take the first exit at the large roundabout onto Bowerham Road. The entrance to the campus is 300 yards on the left, opposite Bowerham Primary School.

From the south leave the M6 at junction 33 and follow the A6 into Lancaster. At the first roundabout, take the third exit onto Bowerham Road. The entrance to the campus is 300 yards on the left, opposite Bowerham Primary School.

By rail

Lancaster is on the main west coast line from London to Glasgow. The campus is a 30-minute walk or short taxi ride away.



University of Cumbria, Bowerham Road, Lancaster LA1 3JD